

043507

LARAMIE COUNTY
CHEYENNE, WY.

CERTIFIED LAND CORNER RECORDATION

'88 MAY 5 PM 1 30

DESCRIPTION OF CORNER EVIDENCE FOUND, AND ORIGINAL RECORD (if known)

Found 6x8" sandstone projecting 0.2 feet above ground w/cross in top of stone hexagon rod projecting 8.0 feet above ground on East side of stone.

T. 19N.
S. 33 S. 34
S. 4 S. 3
T. 18N.
6th P.M.

G.L.O. Record: Set sandstone 17"x12"x8".

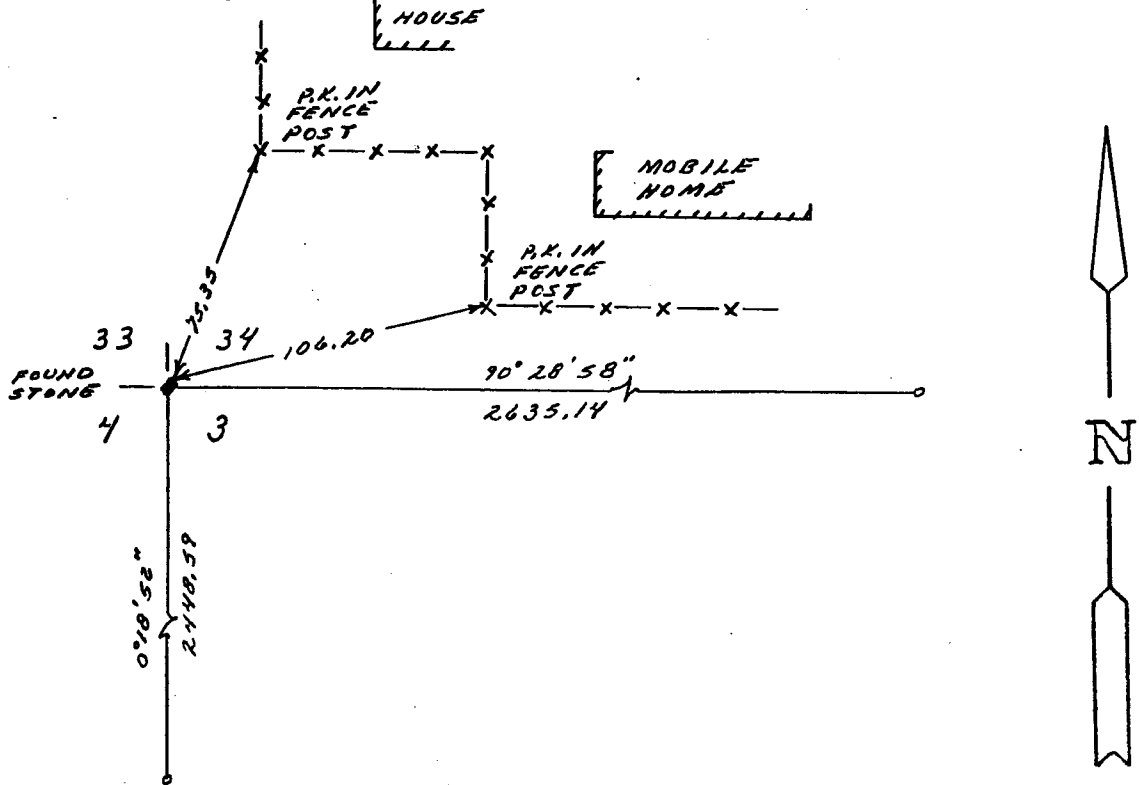
DESCRIPTION OF MONUMENT AND ACCESSORIES ESTABLISHED TO PERPETUATE THE ORIGINAL LOCATION OF THIS CORNER:

At the corner: Not remonumented.

Accessories: See ties below.

SKETCH, WITH COURSE AND DISTANCE TO ADJACENT CORNER IF DETERMINED IN THIS SURVEY.

(May Sketch or Paste Reproduction on Reverse Side.)



I, John A. Steil certify that I have carefully performed or reviewed the work done on the diagrammed corner as reported on this recordation form and approve the same.

John A. Steil
Signature of Surveyor

L.S. 2500
Registration No.

STATE OF WYOMING,

Office of Clerk and Recorder,

County of Laramie

This "corner record" was filed for record on the 5th day of May, 1988, was noted on the cross-index plat and is assigned page No. 2023 in book No. 1250.

Janet C. Whitehead
County Official

Cross Index No. <u>Z-13</u>	T. <u>19N</u>	R. <u>67W</u>	Mer <u>6th</u>
<u>A-13</u>	T. <u>18N</u>	R. <u>67W</u>	Mer <u>6th</u>
_____	T. _____	R. _____	Mer. _____
_____	T. _____	R. _____	Mer. _____
_____	T. _____	R. _____	Mer. _____
_____	T. _____	R. _____	Mer. _____